

TECHNICAL DATA SHEET



COMMERCIAL PCOs



AGRICULTURE



FORESTRY



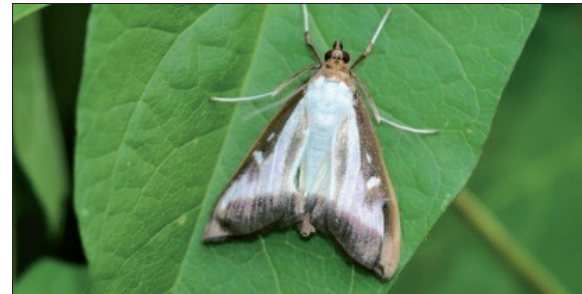
GREEN SPACES & HORTICULTURE



INVASIVE EXOTIC SPECIES

BOX TREE MOTH (*Cydalima perspectalis*)

Adult: The adult Box Tree Moth measures 38-40 mm in length. Both wings are white with purplish highlights and a broad bronze-brown border. The body is predominantly white, with the head, prothorax, and tip of the abdomen a bronze-brown color. Occasionally, adults can be almost entirely brown with a pair of white spots on the forewings.



Source: Canadian Food Inspection Agency

Eggs: Pale yellow to brown, 1 mm in size, deposited in gelatinous masses of 10 to 20 on the underside of leaves.



Source: Canadian Food Inspection Agency

Larva: Up to 38 mm in length. Mainly green body with white and yellow stripes and a row of black and white spots. Shiny black head.



Source: Canadian Food Inspection Agency

Distribution: The Box Tree Moth is a regulated invasive species in Canada. It is established in Ontario and has also been confirmed in Quebec, Nova Scotia, Prince Edward Island, and New Brunswick, as well as Newfoundland and Labrador on nursery stock that originated in Ontario.



Host: Boxwood plants (*Buxus sp.*) are the main host.

Damage: Signs of Box Tree Moth include chewed leaves, browning, defoliation, larvae, webs, and sawdust-like debris.



Source: Canadian Food Inspection Agency



TECHNICAL DATA SHEET



RECOMMENDED MONITORING MATERIAL:

Various types of pheromone traps are available on the market to capture adults (moth), such as the [Delta 1](#), “[Milk Carton](#)” and [Unitrap](#) (commercial use). Traps are used in conjunction with a [pheromone](#) (30 or 60-day field life, depending on model). The trap is used for a whole season, but the pheromone must be replaced at the end of its useful life. Check and empty traps regularly.



[Delta 1](#)



[Milk Carton](#)



[Unitrap](#)

Recommended Trap Density:

Place 2 to 3 traps per hectare (around the perimeter) in large, uniform areas, or 3 to 5 traps per hectare if the area is less uniform (i.e. boxwood/hedges among other vegetation). Hang traps at a height of 1.5 to 2 metres.

Useful Links:

<http://inspection.canada.ca/en/>

<https://landscapeontario.com/tag/box%20tree%20moth>

<https://www.invasivespeciescentre.ca/invasive-species/meet-the-species/invasive-insects/box-tree-moth/>

