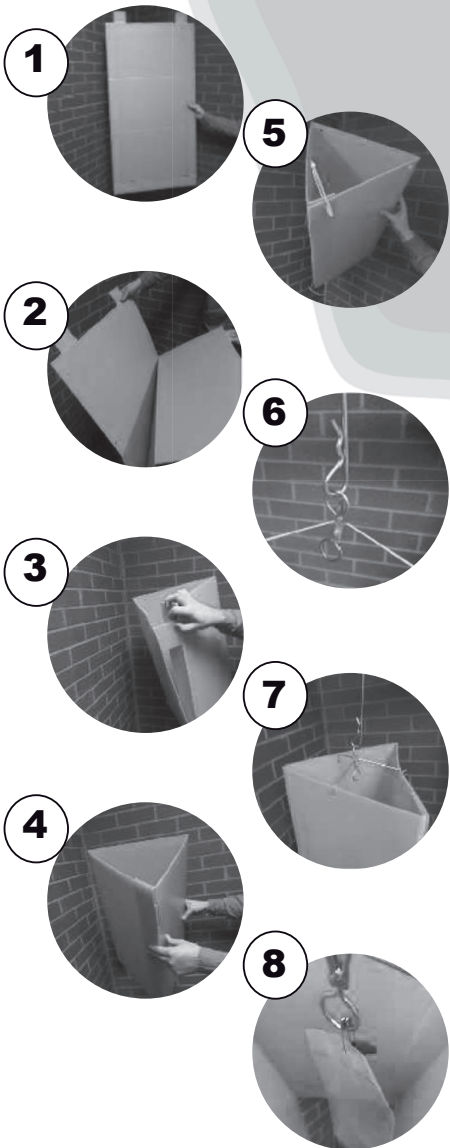
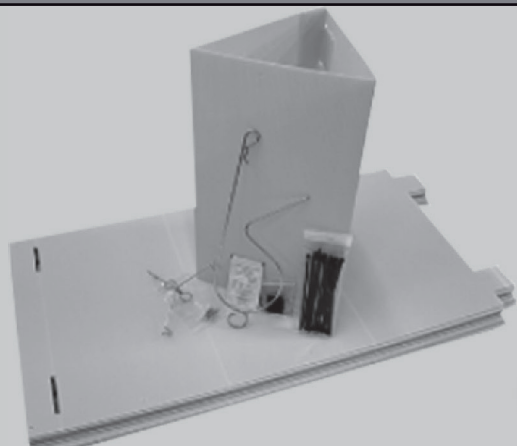


PRISM TRAP ASSEMBLY INSTRUCTIONS

Product No. 40SY386

Components:

- Traps (2) and zip-ties
- Hanger (sold separately)
- Spreader (sold separately)
- Pheromone - lactone (sold separately)
- Attractant - hexenol (sold separately)



How to assemble:

- 1 Remove trap from the packing box. Traps are packaged in pairs.
- 2 Peel traps apart.
- 3 Fold trap into a prism (with sticky side out and line up tabs with tab slots).
- 4 Insert tabs into the corresponding tab slots.
- 5 Insert zip ties into the top and bottom of the tab panel. Secure ties.
- 6 Attach the wire trap spreader to the wire hanger.
- 7 Attach the trap spreader to the three small holes located at the top of the trap, in the center of each panel.
- 8 Pierce the (3Z)-lactone septa with the safety pin. Pierce the (3Z)-hexenol lure with the second safety pin. DO NOT pierce the pouch below sealed line. Attach both lures to the loop below the wire spreader.

NOTE TO USER :

- *Keep lures frozen until use*
- *Hang trap in the upper half of the canopy of the ash tree*
- *Hang in the outside of the canopy amongst the leaves*

For customer support



solida.ca

info@solida.ca

418-826-0900