

UNITRAP for BEETLES / Green Trap with Yellow Vanes

ASSEMBLY INSTRUCTIONS

Product No.
301Y603

Components:

- A. Bucket
- B. Funnel
- C. Vanes

- D. Lid
- E. Cage with Cap
- F. Japanese Beetle
bait pack
(sold separately)
Product No. 3013903

E



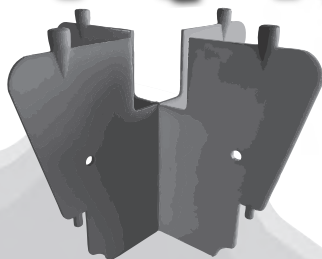
F



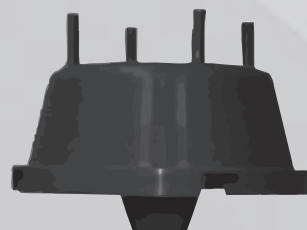
D



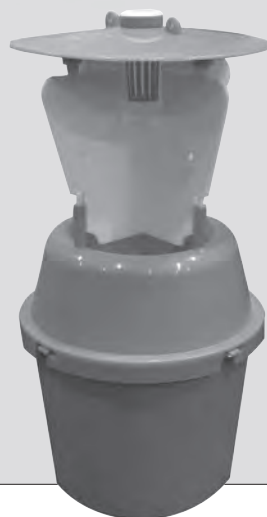
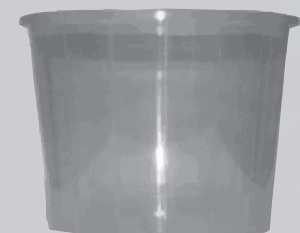
C



B



A



ASSEMBLY:

1. Attach funnel to the bucket by aligning the two parts and twisting to close.
2. Attach vanes to the funnel by carefully pushing the 4 inserts on the bottom of the vane over the raised pegs on the funnel.
3. Attach lid to the vanes by aligning the 4 holes in the lid with the pegs at top of vanes. Gently push the pegs into the holes until lid is firmly attached.
4. If using the bait pack, peel off protective backing, insert twist tie in hole and hang from lid (open side facing out). The bait pack has a field life of one season.
5. Thread cord through the two holes on lid top and hang trap.

DISTRIBUTIONS
SOLIDA inc.

solida.ca info@solida.ca 418-826-0900