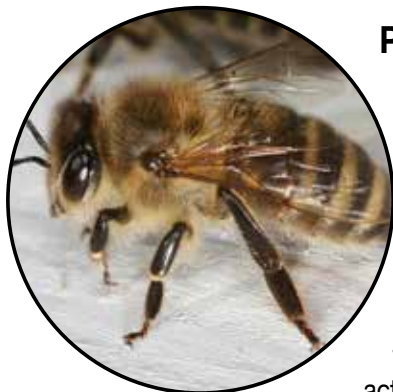


Technical Data Sheet



APISBLOOM®

Attractant for Honey Bees, *Apis mellifera*



PRODUCT DESCRIPTION

APIS BLOOM is a pheromone-based attractant designed to enhance pollination via honey bees. APIS BLOOM contains the same pheromone found in the Nasonov gland of worker bees. Worker bees use this pheromone to communicate with fellow worker bees, informing them pollen and nectar are available for foraging. Use of APIS BLOOM mimics this communication system, causing worker honey bees to increase their activity, increasing pollination, fruit quality and yields.

APIS BLOOM is an environmentally friendly solution that will not negatively impact honey bees.

APPLICATION

APIS BLOOM is designed for application in the agricultural environment for crops where more pollination is desired or in crops that are difficult to pollinate. Apply to the point sources to upper third of the plant's stem or a wooden stake. Beehives should be placed equidistantly relative to the area being treated for homogenous pollination throughout the field.

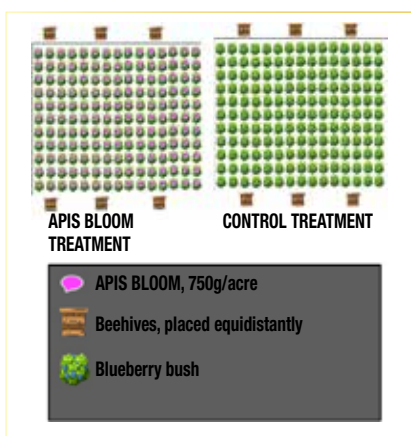
USE INSTRUCTIONS

750g of APIS BLOOM per acre, applied as a minimum of 250 point sources per acre. For optimal field life, ISCA recommends application of 3-gram dollops. Optimal dollop size and density may vary depending on crop. Contact Distributions Solida for confirmation. Apply when the crop has started flowering (between 5-10%).

DOSE 750g/acre, 250 point sources per acre.

ADVANTAGES

Use of APIS BLOOM can lead to significant increases in pollination, fruit quality and yield. By increasing the efficiency of each beehive, pollination investments will yield a better performance and increased ROI.



PRODUCT CODE

APIS BLOOM

COMPOSITION

- (Attractant) Pheromone
- Splat

APPEARANCE

Pink color paste with the consistency of tooth-paste.

STORAGE

Store in original container, at room temperature and in a dry environment.

Avoid extended exposure to direct sunlight.

SHELF LIFE

24 months at 25°C.

PRECAUTIONS

Ready-to-use; do not add water.

Wear gloves and eye protection during application.

PACKAGING

750g caulking tube and bulk

APIS BLOOM applied via caulking gun in raspberries, Oxnard, CA



APIS BLOOM applied via caulking gun on almond farm, Fresno, CA



solida.ca info@solida.ca 418-826-0900