

Technical Data Sheet



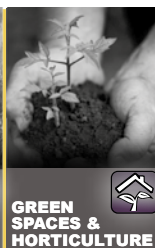
COMMERCIAL
PCOs



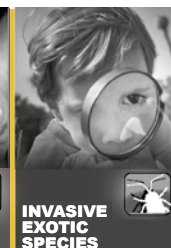
AGRICULTURE



FORESTRY



GREEN
SPACES &
HORTICULTURE



INVASIVE
EXOTIC
SPECIES

Strawberry Blossom Weevil (*Anthonomus rubi*)



Pest Details

Adult

Length of 2-3.2 mm (not including rostrum). Usually black but sometimes with red or brown sheen. Pubescence of elytra sparse and grey. First funicular antennal segment more than twice as long as wide. Antennae emanating from the terminal third of rostrum

Larvae

Length of 3-3.5 mm. Curved "C" shaped and white with a brown head.

Eggs

White, smooth, shiny and slightly oval in shape, deposited into holes made in the floral tissue of its host.

Distribution

Central, Northern and Western Europe.

Economic Host(s)

Strawberry (*Fragaria*) and to a lesser extent Raspberry (*Rubus*)

Symptoms/Signs

Following oviposition into the flower bud, females sever the stalk to prevent sap flow, thus killing the developing flower. Adults also feed on foliage. Plant beating should help check for the presence of adults.

Generations: 1 per year

Lure Code(s) A19

Mode of Action Sex Pheromone attractant

Active Chemical(s) Grandlure I, Grandlure II, Lavandulol & a plant volatile

Available Products Standard Lure with 28mg pheromone & 0.5g kairomone

Dispenser Details Small wax plug and small polymeric vial sealed within a semipermeable sachet

Active Life 5-7 weeks (temperature dependent)

Monitoring

Adults present

April to July

Trap Positioning

At a similar height to the crop placed on the ground with the bucket buried if a vane trap is used. Traps should ideally be placed near the edge of the crop where greater damage occurs.

Recommended Trap Density

2-4 traps per hectare

Recommended Traps



Pitfall Trap: In the colour shown with small vanes

Trap Maintenance

Check traps on a regular basis; at least twice a week. It is recommended to replace the pheromone dispensers every 4 weeks to achieve optimum results.

Storage

Keep product away from direct sunlight, heat, sparks and open flame. Store in a refrigerator for a shelf life of 12 months or a freezer for an extended life of 18 months. Always store sealed in original packaging.



solida.ca info@solida.ca 418-826-0900