

# Technical Data Sheet



COMMERCIAL  
PCOs



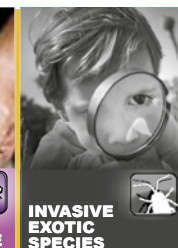
AGRICULTURE



FORESTRY

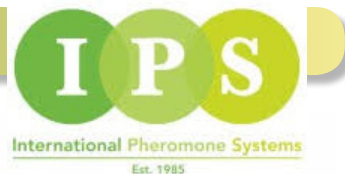


GREEN  
SPACES &  
HORTICULTURE



INVASIVE  
EXOTIC  
SPECIES

## MuscaTract



### Muscid and Calliphorid Flies



#### Pest Details

Many Calliphorid and Muscid flies are important pests of humans and animals. The feeding habits of these flies brings them into contact with humans and domestic animals resulting in the spread of diseases, contamination of foodstuffs and harassment of livestock. Some species can also bite, such as the stable fly.

The most problematic fly pests include the Housefly, *Musca domestica* and Bluebottle and Greenbottle flies. These pests are attracted to proteinaceous food sources which they require for egg development. Our Muscalure attractant is especially formulated to work quickly and will continue to function efficiently for over four weeks.

#### Control

##### Adults Present

March to October (Climate dependent)

##### Trap Positioning

Hang at a height of ca. 1.5m. For best results traps should be positioned in semi-shaded locations such as beneath trees or in hedgerows.

Traps should also be located near feeding/breeding sites such as refuse bins. Position traps 15m or more apart or slightly closer when near high population areas such as refuse bins.

Lure Code M03B

Product Name MuscaTract

Active ingredient Fishmeal

Dosage 45 g

Product Description Food based attractant

Dispenser Type Semi-soluble powder

Active Life 4-8 weeks (temperature\population dependent)

#### Recommended Traps

Musca Trap



#### Trap Maintenance

Check traps on a regular basis. We recommend that water should be added periodically to prevent traps drying out. Once the trap is full or if no longer attracting flies, remove and replace with a new Muscatrap and Muscalure.

Performance of protein baits is best during the warmest months when interest in proteinaceous food sources is greatest. Performance of traps is reduced if allowed to dry out.

#### Storage and shelf life

Shelf life: 24 months from date of manufacture in original packaging and ideal storage conditions.

Keep product away from direct sunlight and ignition sources. Store, sealed in original packaging at ambient temperatures, preferably below 15 oC.



solida.ca info@solida.ca 418-826-0900