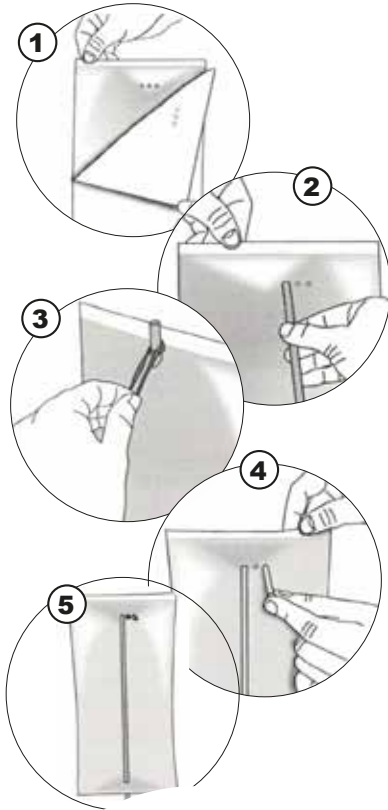


PEPPER WEEVIL KIT ASSEMBLY INSTRUCTIONS

Components:

- Ⓐ 8 yellow sticky cards
- Ⓑ 4 pheromone/attractant sets (PEW I and PEW II)



Trap Assembly

- 1 Remove protective paper from each side of the trap.
- 2 Insert stake/dowel (not included) in the holes provided at top and bottom of trap (three aligned holes should be at top).
- 3 To keep trap at the correct height (above plant canopy), secure trap on stake with a rubber band or twist tie (not included) below and above trap.
- 4 Place the two PEW lures into the two remaining holes at the top of the trap. Transfer lures to replacement trap if new trap is needed before lure efficacy period is up.
- 5 Install traps in or next to the pepper field, just above plant canopy, at a rate of 1 or 2 per acre, to detect hot spots and direction of migration.

Lures should be replaced every 2 to 3 weeks. Replace sticky traps as needed to maintain effectiveness.

NOTE TO USER: To prolong storage life, refrigerate or freeze unopened lures. To avoid contamination, use tweezers or rubber gloves when handling.

**For more information about pheromones or other available products, contact Solida or visit www.solida.ca.*

